
UNDERSTANDING THE JOURNEY

A Bimonthly Newsletter from Healthful Energetics, LLC
<https://understandthejourneys.com>
<https://www.sheilajwood.com>

Love - The Unseen Energy That Sustains Us Inspired by Les Miserables



WRITTEN BY SHEILA WOOD

Les Miserables is a story about the French Revolution in 1789. It has a lot of tragic elements that are filled with the much alive and pulsating themes of enduring love and HOPE.

DO YOU HEAR THE PEOPLE SING

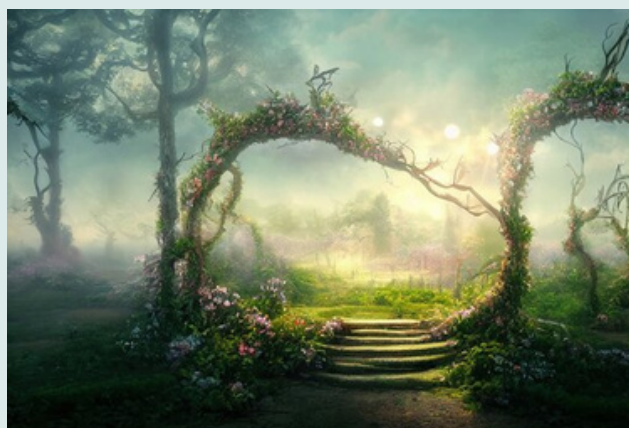
<https://www.youtube.com/watch?v=gYb9sRLUDyM>

The remonstrations are about a life that is about to start 'when tomorrow comes'. People are seen as 'climbing to the light' and reference is made to a flame that never dies. It speaks of freedom when chains are broken and reaches for what we can do on the other side. En masse, this citizenry speaks of a 'world you long to see'.

I often think about the differences between how we live in our world and what happens to us on the other side after we pass. There is the distinct understanding in this production that our destiny, although shaped on Earth, does not move very quickly toward fulfillment until the 'chains are broken'. It is love and hope that breaks those chains and releases us to see our journey more clearly. There is also the inherent feeling that we can do so much more for our soul, for others, and for the world when we are free to do that from the other side.

Do you hear the people sing?
Singing a song of angry men?
It is the music of a people
Who will not be slaves again!
When the beating of your heart
Echoes the beating of the drums
There is a life about to start
When tomorrow comes!

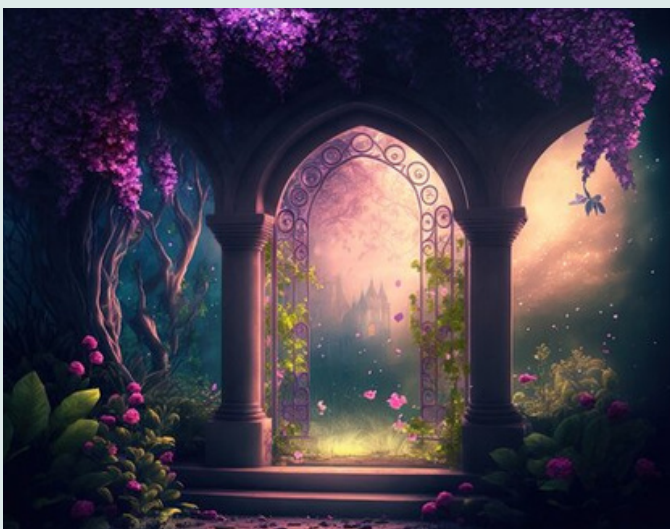
Will you join in our crusade?
Who will be strong and stand with me?
Somewhere beyond the barricade
Is there a world you long to see?



A FALL OF RAIN

We see around Epitone's passing that there is a clarity when we are facing death that comes when earthly energy changes into ethereal energy. This epitomizes the concept that **LOVE** is transformative. Celestial energy enters as earthly energy changes.

When the realization hits that our time is now, we want our most beloved friends beside us. We want the last face we see on Earth to be that of our most intimate friend. The connection that is evident at this time will remain. The touch of a person's soul will fortify that energy for incarnations to come. Pain disappears and love reigns.



A little fall of rain,
Can hardly hurt me now
That's all I need to know
And you will keep me safe,
I will stay with you
And you will keep me close,
Till you are sleeping
And rain,.....
Will make the flowers.....
Grow.

BRING HIM HOME

This song is about reaching for the protection of a young boy who is lost among the fighting.

<https://m.youtube.com/watch?v=ZknT314-tKY>

When we reach out to a force that can put the pieces back together after we lose a child or a loved one, the suffering is palpable. How can we see the love in this? If we were seeing it from the other side, would our perspective possibly change?

God on high, Hear my prayer
In my need, You have always been there
He is young, He's afraid, Let him rest, Heaven blessed.
Bring him home, Bring him home, Bring him home.
The summers die, One by one, How soon they fly, On and on
And I am old, And will be gone.
Bring him peace, Bring him joy
He is young, He is only a boy
You can take, You can give
Let him be, Let him live
If I die, Let me die, Let him live
Bring him home
Bring him home
Bring him home.

You may be wondering why I am dwelling on the passing of characters in this play and wondering how it relates to love. We see in this tragic tale a reflection of the underpinnings of our journeys – struggles peppered with hope and how hope is bounded in love. Both provide the unseen connection toward redemption.

Redemption as it happens here has more to do with how the characters feel about themselves and not so much about how they are judged by external forces.

In this Easter season as Christians celebrate the message of death intricately woven together with love, the message becomes clear. It parallels what happens around the death of Christ. We see that the love that permeates passing away is intensified and welcomed and although sometimes accepted with resignation, is surrounded with love.

Death is an intense time but we are warmed by the joy in celestials appearing to welcome us. Whatever message religion brings to this time, if we can remember that death is linked to ultimate love, the energy connections can be nurtured. It is these feelings of love that sustain us.

Epilogue

The moving bits for me..... Come with me- take my hand..... - love is everlasting - remember truth - to love another person is to see the face of God.

John Valjean's death is the end of a long journey toward redemption as he saw himself as beyond all hope. Death to him is a culmination of life's work surrounded by the welcome forgiveness of both his daughter and ultimately God.

Do you hear the people sing
Lost in the valley of the night
It is the music of a people
Who are climbing to the light

For the wretched of the earth
There is a flame that never dies
Even the darkest night will end
And the sun will rise.

They will live again in freedom
In the garden of the Lord
They will walk behind the plough-share
They will put away the sword
The chain will be broken
And all men will have their reward!

Will you join in our crusade?
Who will be strong and stand with me?
Somewhere beyond the barricade
Is there a world you long to see?
Do you hear the people sing
Say, do you hear the distant drums?
It is the future that they bring
When tomorrow comes!
Tomorrow comes!

Send me your questions

BY SHEILA WOOD

I am interested in what is on your mind as you progress through spiritual learning curves. Your questions will also help others to learn about different aspects of metaphysics.

This page will reflect your input and curious mind. Hopefully, it will be a continuous dialogue and serve to develop concepts as inputs are collected.



As we all know, often answers to questions birth more questions.

So in a word - this is the "Don't Be Shy" page.

Still want to know about animals. I don't think they reincarnate into a different life like humans. I know that much. Or feel I do. But can they reincarnate into another pet for the human?

Nancy

Stay tuned....some answers/comments next time

"Make sure that you project from your heart and listen to others. It is the best way to grow."



Next question, so if you pretty much reincarnate with the same family group will that also go all the way back to if you came from a different planet? Nancy

Souls may originate from any point in the universe ie., other realms, other galaxies, other planets, other star systems, etc. Souls may be born in multiples or as singles. Multiply originated souls tend to be those folks who are outgoing, like to party and are social creatures. Those born singly tend to have introverted natures.

As far as soul families go, I prefer the term "soul travelers" and feel that it is a much more appropriate term to use. This fits much better with the soul journey and purpose that is meant to be fulfilled before a soul may cease to incarnate. Varied experiences per incarnation shorten the time required to learn all required lessons. Reincarnating into the same family with the same souls extends the learning time and the number of incarnations necessary to mature as a soul.

I prefer to see souls making choices to perhaps incarnate into the same world but not necessarily the same immediate family. This allows for the possibility of 'running into' a soul they have known from previous lives but at the same time allows for different experiences within a different family experience.

Movement and choices are made at the soul level and not at the human level. We as humans tend to want to make it about family but understand that souls do not hang out on the other side and wait as a bunch to incarnate into the same family line time after time. This would be quite non-productive for their necessary learning curve. We perceive family from a human perspective but from an ethereal perspective soul family means something entirely different than what we see as our family structure.

Souls take back their experiences with certain families here and share them with souls on the other side so two souls experiencing the same human family would seem redundant.